



How to Copy Markup Within a Guide Step

How to Copy Markup

Written By: Dozuki System



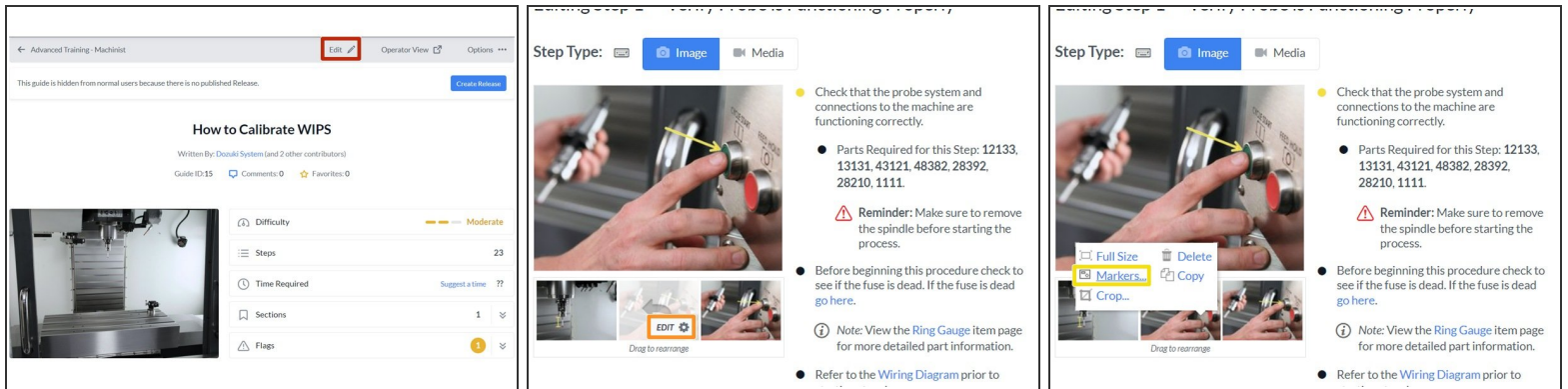
INTRODUCTION

This guide demonstrates how to copy image markup within a Dozuki guide step. Duplicating markup keeps the size and dimensions of markup consistent without you having to create each one from scratch.

Reminder

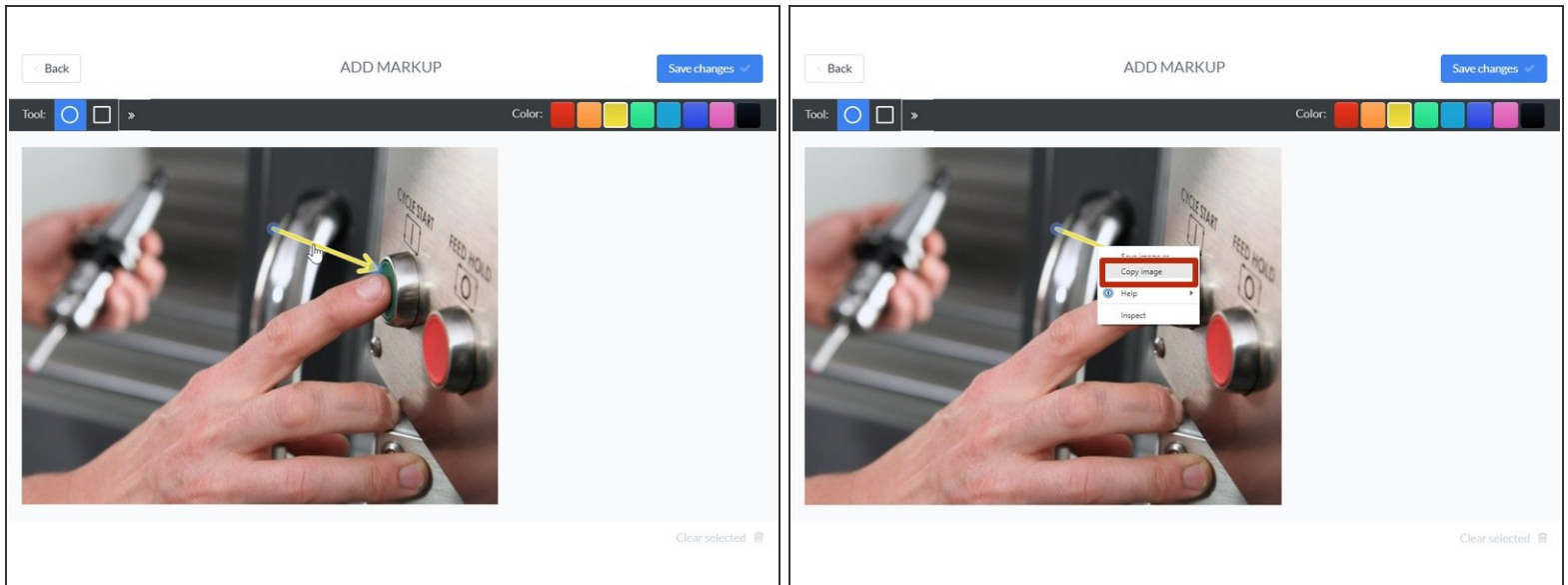
Any changes made to a guide, with the exception of tags and the default language, create a new draft of the guide.

Step 1 — How to Copy Markup Within a Guide Step



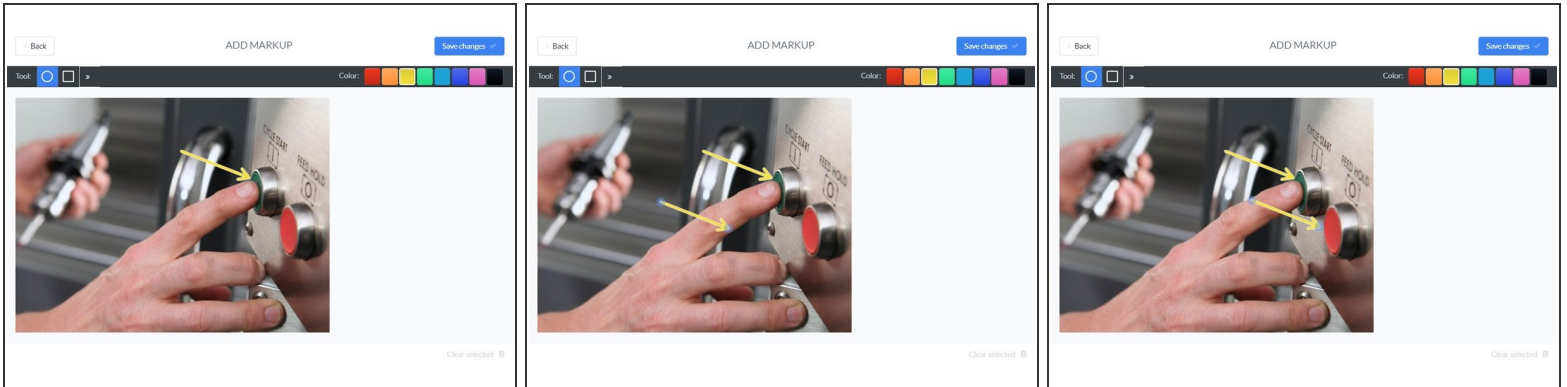
- Navigate to the site header and click on the **Edit** button.
- Hover over the desired image and click on the **Edit** button.
- Select **Markers...** to open the markup editor.

Step 2



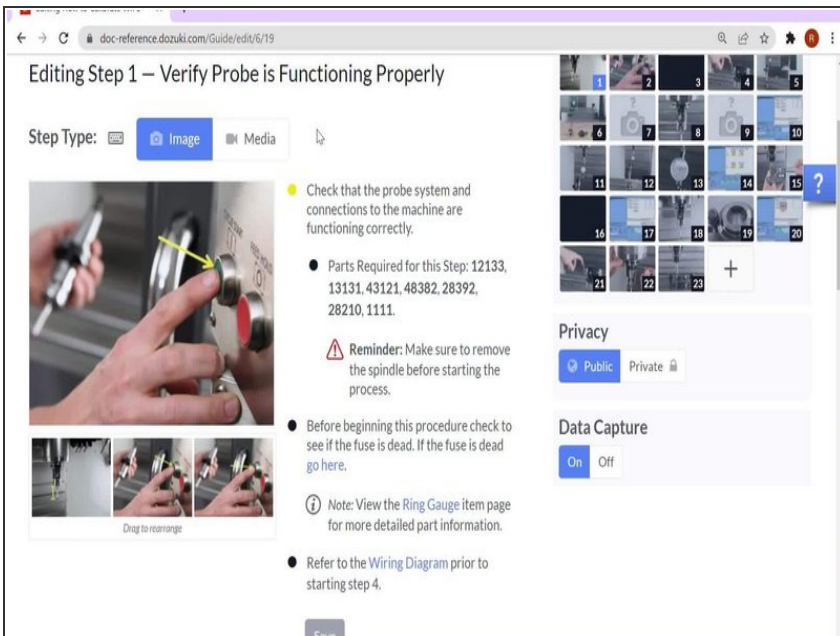
- The example markup to be duplicated is the yellow arrow.
- Left-click on an existing markup to select it.
 - ① In this example, the existing markup points to the Cycle Start button on the machine.
- Right-click on the markup and select **Copy image** from the menu that appears.
 - ① You can also input **Ctrl + C** on Windows or **Command ⌘ + C** on a Mac.

Step 3



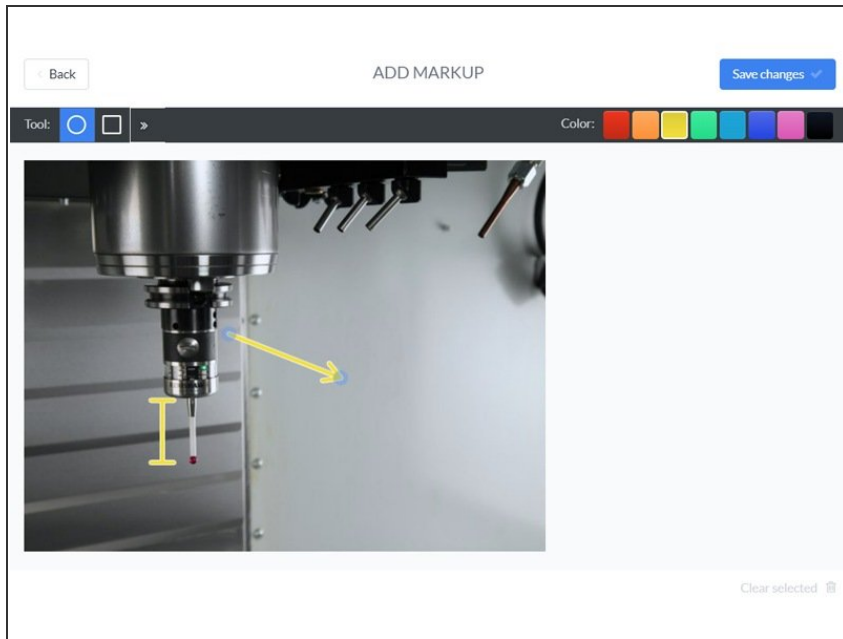
- ✎ You can copy via right-click but not paste.
- ❗ Pasting must be done with the keyboard shortcut.
- Paste the copied markup by entering **Ctrl + V** on Windows or **Command ⌘ + V** on a Mac.
- ❗ A duplicate markup appears in the center of the image and is selected by default.
- ❗ The arrow markup, that was used to point out the Cycle Start button on the machine, has been duplicated and moved to point out the Feed Hold button.

Step 4



- Keyboard Shortcuts

Step 5



- i The markup copy/paste function works within the same picture or multiple pictures within a step.
- ★ It does not work across multiple steps, multiple guides, or outside of Dozuki.