



How to Embed Media in Guide Steps

This guide demonstrates how to embed images and videos in Guide Steps using the Media Manager.

Written By: Dozuki System



INTRODUCTION

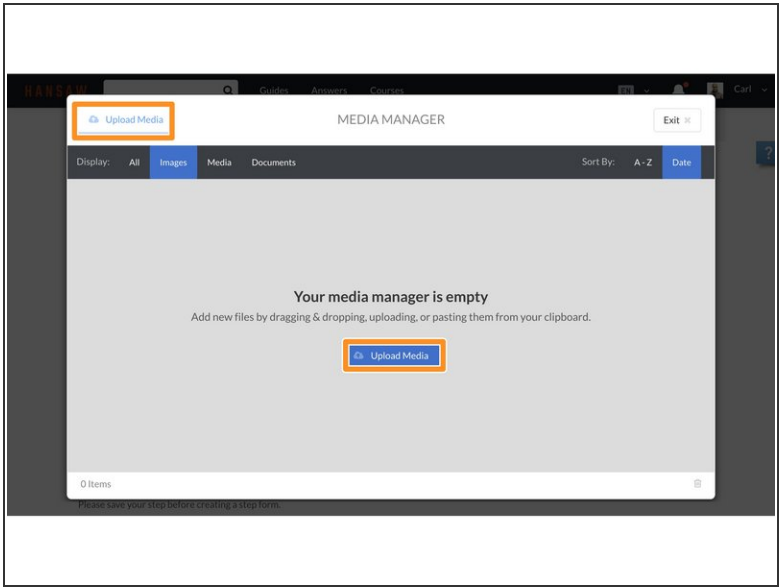
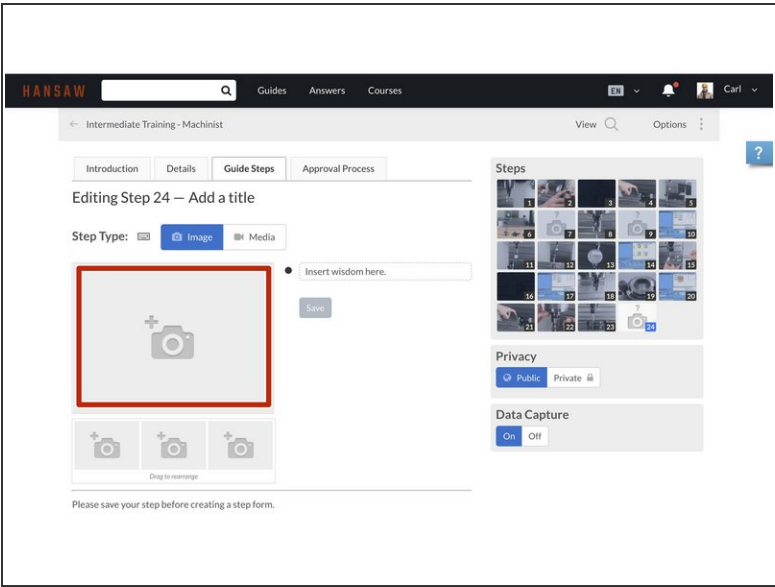
This guide demonstrates how to embed images and videos in Guide Steps using the Media Manager.

If you are looking to add dynamic media to a guide, go to [Dozuki Integrations Page](#) for more information.

Reminders

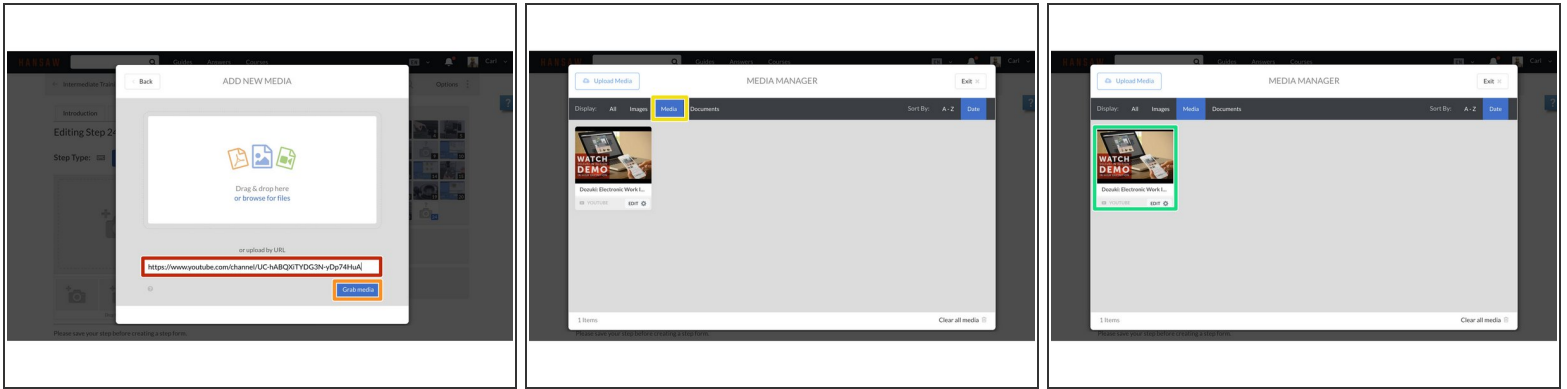
Any changes made to a guide, with the exception of tags and the default language, create a new draft of the guide.

Step 1 — How to Embed Media in Guide Steps



- To open the Media Manager from within a guide, click on the **Image/Video** placeholder.
- Click on the **Upload Media** button.

Step 2



- Copy the URL from the media source.
- Paste URL in the **Upload URL** field below the Drag & Drop field.
 - ❗ *This example uses a YouTube video, but Guides also support Vimeo videos and those that support oEmbed.*
- Click on the **Grab media** button.
- Click on the **Media** tab in the **Display** header.
- Click on your media to add it to your Guide Step.

Step 3 — Image Dimensions



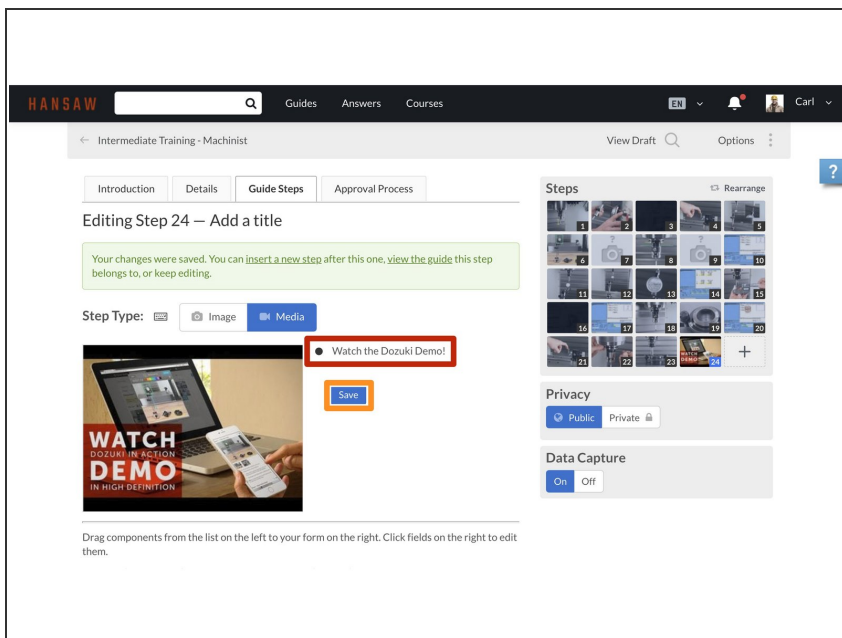
- ① Dozuki automatically scales up images that are smaller than 800x600, and scales down large images to fit the frame.
- ✦ While you can still upload images smaller than 800x600, this often comes with a reduction in image quality.
 - Click **Yes** on the confirmation dialog to proceed with the upload.
- ✦ You will have to manually resize images that are smaller than 50x50, as the Media Manager will not scale dimensions that small.

Step 4



- Dozuki also supports many [Standard Integrations](#).
- For example, this step contains a code snippet called a Gist.
- Here's a link to [this Gist's source](#).

Step 5



- The embedded media will be added to the Guide Step.
- Add your text.
- Click **Save**.

That's it!