

DOZUKI

How to Copy an Image Back to Your Media Manager

This guide shows how to copy an image back to the Media Manager for reuse.

Written By: Dozuki System

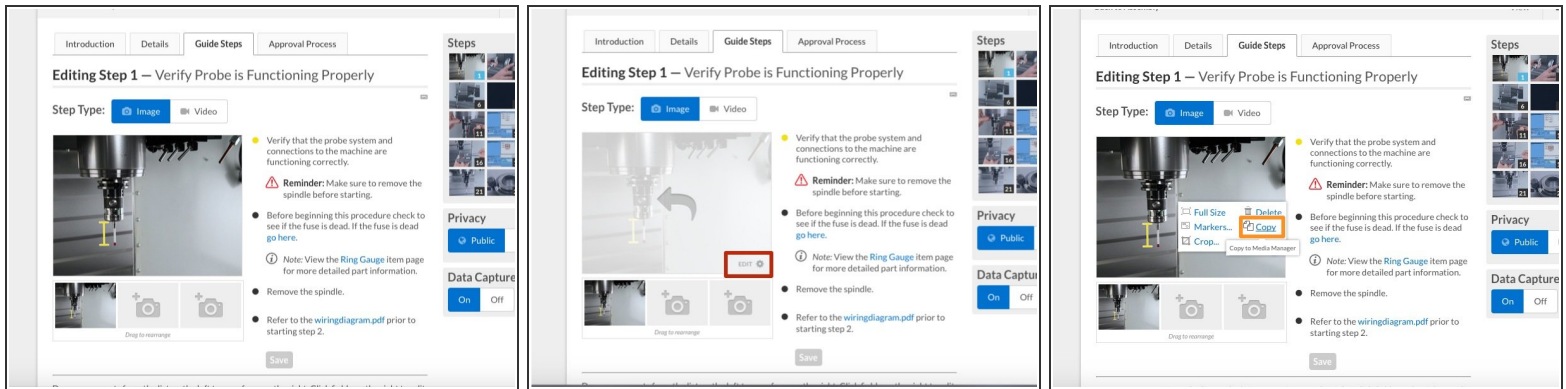


INTRODUCTION

This guide shows how to copy an image back to the Media Manager for reuse.

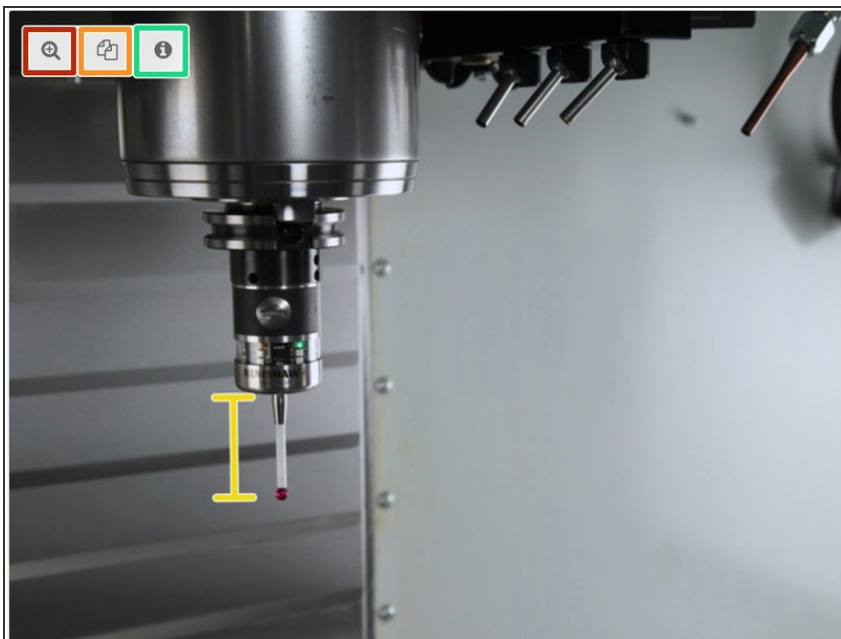
The Media Manager in Dozuki is designed for uploading images to use in a single guide. Users may want to reuse images that have already been added to a guide. In order to reuse an image, it needs to be copied back to the Media Manager.

Step 1 — How to Copy an Image When Editing a Guide



- Once you add an image to a step, it can be copied back to your media manager for reuse.
- After you add the image to the step, hover over the image and click on the gear icon that appears in the lower-right corner of the image.
- On the list of options, click **Copy**.
 - The image will be added back to your media manager.

Step 2 — How to Copy an Image When Viewing a Guide



- Hover over the image, and a menu will display.
- You now have the option to:
 - View the original image that was uploaded.
 - Copy the image to your media manager.
 - View image metadata.