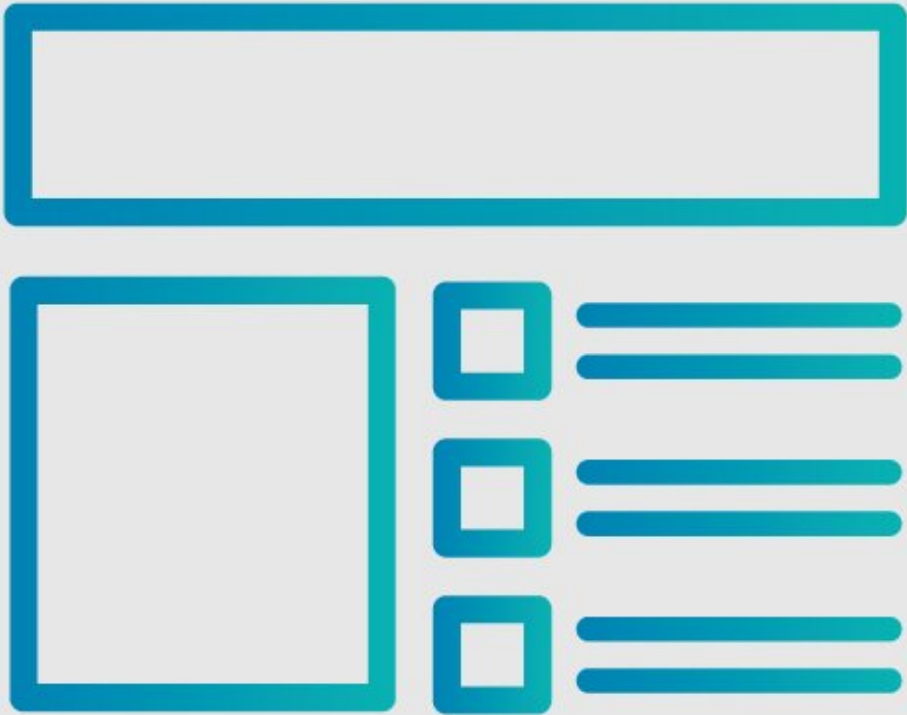




How to Add Prerequisite Guides

This guide demonstrates how to add prerequisite guides from the same category or multiple categories.

Written By: Dozuki System



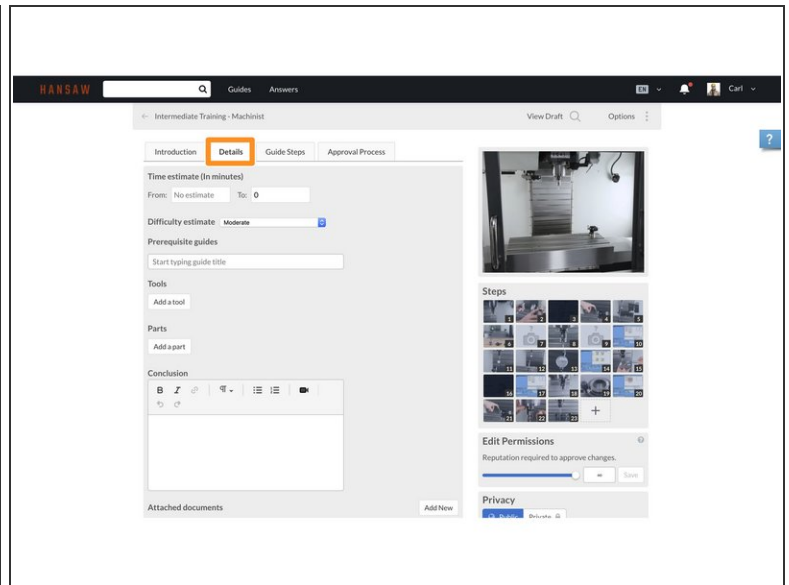
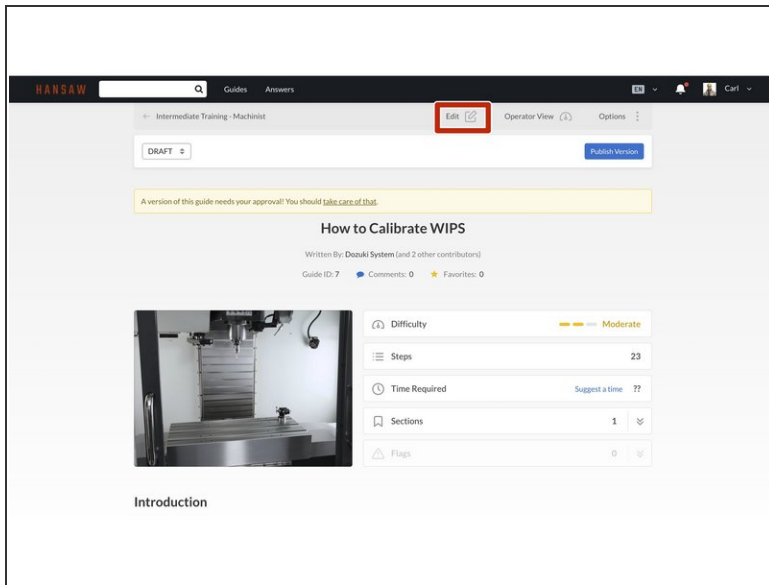
INTRODUCTION

This guide demonstrates how to add Prerequisite Guides.

Reminder

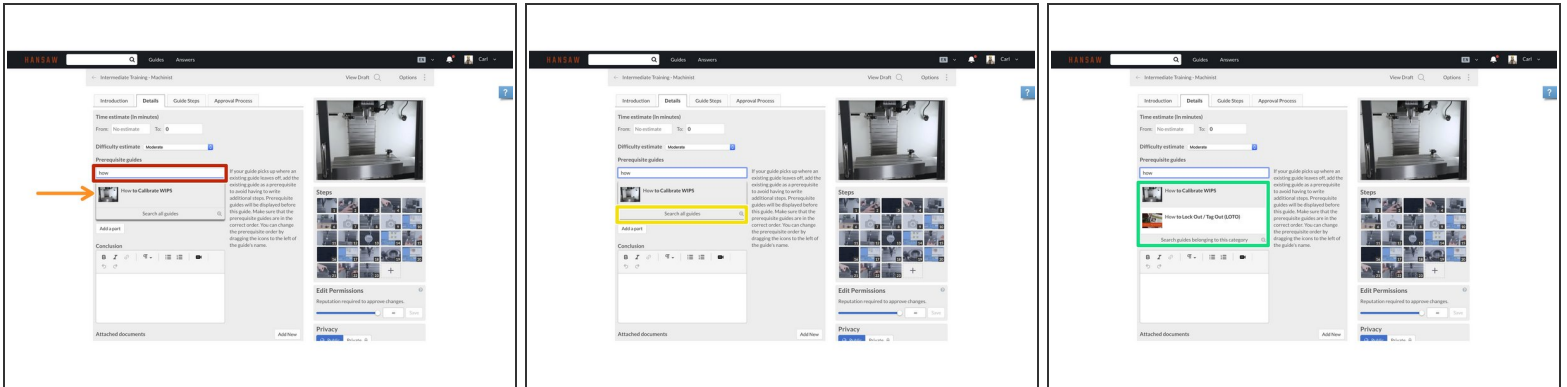
Any changes made to a guide, with the exception of tags and the default language, create a new draft of the guide.

Step 1 — How to Add Prerequisite Guides



- Click on the **Edit** button in the upper-right of the page, beneath the site header.
- Click on the **Details** tab.

Step 2



- Click in the **Prerequisite guides** field to add your prerequisite.
- If the guide to which you are adding a prerequisite is in the same category as your current guide, type the name of the guide and select the guide from the drop-down menu.
- If the guide that you want to add as a prerequisite is not in the same category as your current guide, click **Search all guides** located at the bottom of the drop-down menu.
- A list of guides will display in the drop-down menu. When the guide that you want appears, click on it to add the prerequisite guide.